

Lanex netDVR

Feature-Rich, Easy-to-Use Solutions for Retail Organizations

Reducing Fraud, Minimizing Loss

The **Lanex netDVR™** is a 4- to 16-camera digital video recorder designed specifically to meet the needs of retail organizations.

The Lanex netDVR captures critical images and relates them to specific transactional data, delivering actionable intelligence for reducing shrinkage, decreasing liability, and improving profitability.

Ideally suited for small- to medium-sized retail organizations, this digital video recorder offers robust functionality, feature-rich interface capability, programmable bandwidth utilization, and ease of installation, programming, and use. Its unique modular design allows for the remote upgrade of camera ports and other features.

Powerful Integrations for Actionable Intelligence

Verint integration with central station monitoring

software allows rapid video verification of alarms. On-site alarm panel integration links video of a security breach with network communications from the alarm system, providing a more complete understanding of event context.

Reliable, Secure, Compact

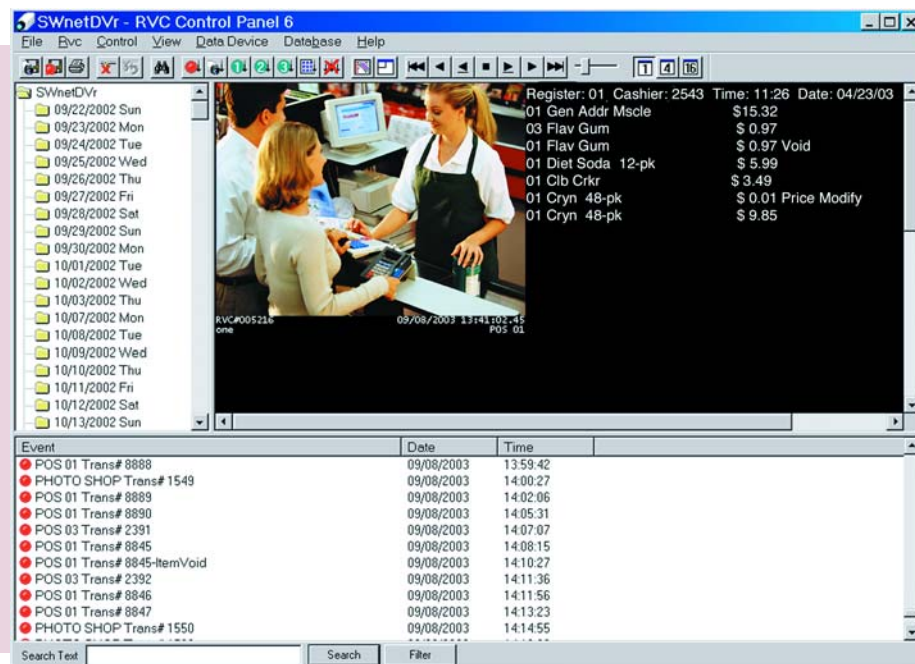
Built with an embedded operating system, the Lanex netDVR is designed to be more secure and reliable than conventional video recorders. It can be remotely managed and upgraded for rapid deployment and streamlined operation.

Remote System Monitoring

HealthCheck™ helps organizations remotely and rapidly detect video, connection, disk, and/or interface problems. HealthCheck promotes better system performance and more efficient management of your video surveillance system.

Designed to help retailers reduce shrinkage, diminish liability and loss, and improve profitability

- ✓ Alarm and POS integration
- ✓ Embedded operating system for greater network security and reliability
- ✓ Supports POS interface migration from serial to IP
- ✓ Programmable DVR bandwidth limit
- ✓ Critical sector mirroring to extend drive life, and optional drive mirroring for video backup
- ✓ Powerful exception report keyword search capability



The easy-to-use Control Panel software allows you to connect to a Lanex netDVR via standard phone lines, network, or local access cable. Once connected, you can retrieve video, change settings or search for a specific transaction.

System Specifications

Frame Rate

- 15 FPS (available)
- 30 FPS (available)

Media

- 120-1600GB video storage
- Critical sector mirroring (standard)
- 100% disk mirroring (optional)
- CDRW (optional)
- Removable hard drive

User Interface Software

- Synchronized audio/video playback
- Remote access for image retrieval and system configuration
- Multiple screen display (1, 4, or 16 camera)
- Easily search and find specific images and transactions by time, date, number, transaction, or event
- Partitioned archiving for general, motion, and event-based recording
- Live view
- Simultaneous recording during live view, event storage, or image retrieval
- Fully programmable events and scheduling
- Compatible with Windows 95 and higher
- Compatible with Dellis™ Enterprise Software Solution

Video Inputs

- 16 cameras
- NTSC/PAL

Audio Inputs

- 2-channel (optional)

Monitor Output

- Switched analog video output

Retrieval Transmission Options

- Ethernet 10/100 Base T
- Dial up modem (optional)
- RS 232 local access

Remote System Verification

- HealthCheck compatible

Compression Format

- WaveletPlus
- Unalterable Image Format (UIF)

Image Quality

- User defined (high/medium/low)
- 320 x 240 resolution (standard)
- 640 x 240 resolution (optional)
- 640 x 480 resolution (optional)

Alarm / Event Contacts

- 16-user configurable input contacts
- 2-user configurable output contact

Motion Detection

- Motion Prompted Archiving (MPA)

Data Input

- Dual RS 232 data inputs
- SR-16 Migratable Interface (optional)

Data Recording

- Digitized data capture
- Sidebar data display

Data Interfaces

- Alarm interfaces
- Point Of Sale (POS)

Physical

- 16.75" wide x 12" deep x 1.75" high
- 10 lbs.
- 40-120°F operating environment
- Wall, rack, or shelf mount

Electrical

- 100-120VAC / 200-240 VAC, 60/50 Hz



AIRLINX Communications, Inc.
Box 253
Greenville, NH 03048
E-mail: sales@airlinx.com
Tel: (888) 224-6814
Fax: (603) 878-0530